

Equal distribution of responsibilities at the family farm as a projection of economically efficient management.
The integrated concept of the family farm.

Sofia Burtak

PhD, Training & Gender
programs Manager

Equal distribution of responsibilities at the family farm as a projection of economically efficient management. The integrated concept of the family farm.

Sofia Burtak, PhD, Training & Gender programs Manager | Coop Academy | DAAS
Roman Bezus, PhD, trainer of co-op financial literacy | Coop Academy | DAAS

Ukraine Grain Storage and Marketing Cooperatives Project

Canada 



Dairy Business Development Project in Ukraine

Canada 



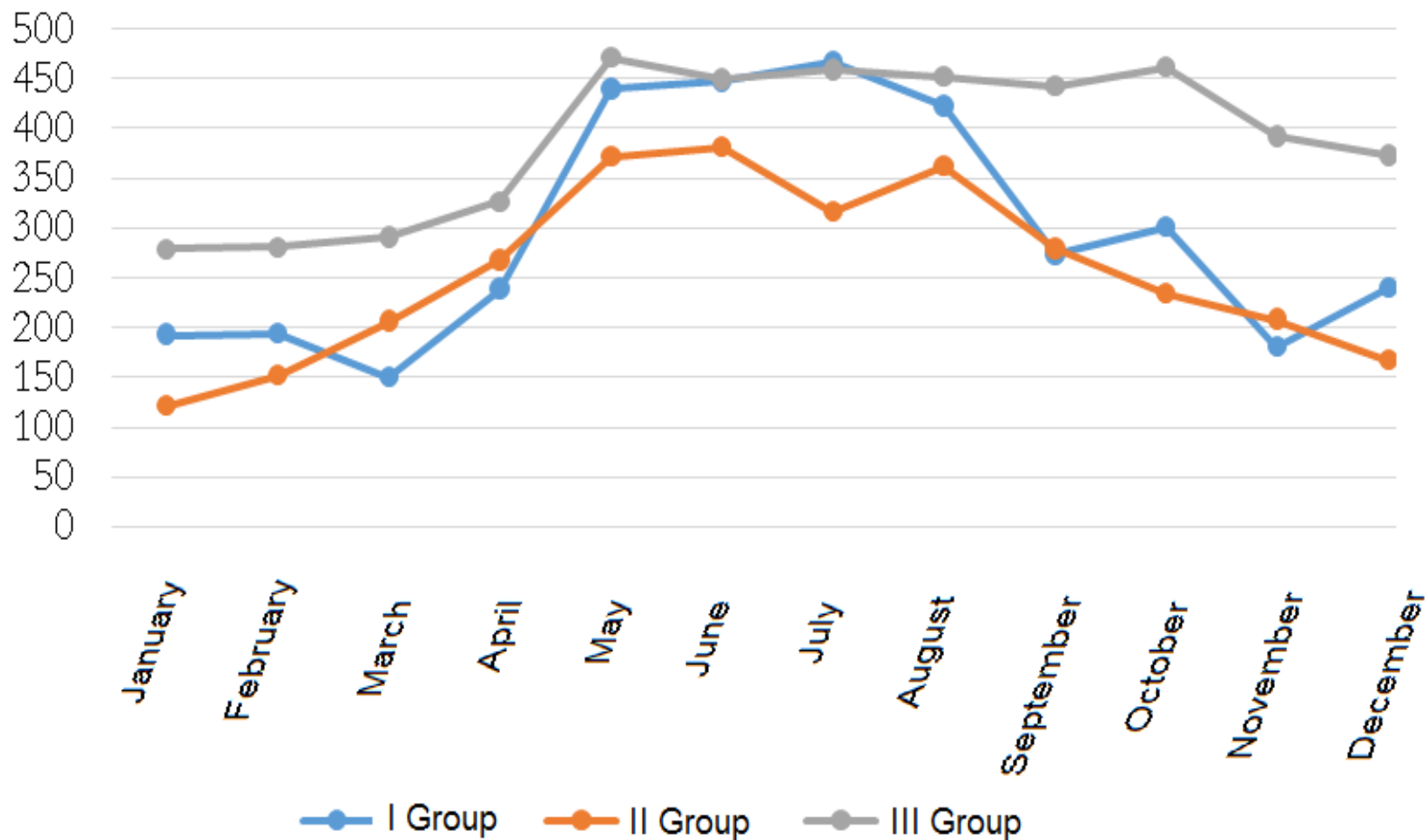
One always has enough time, if one will apply it well.

Johann Wolfgang von Goethe

Time is the most unknown of all the unknown things.

Aristotle

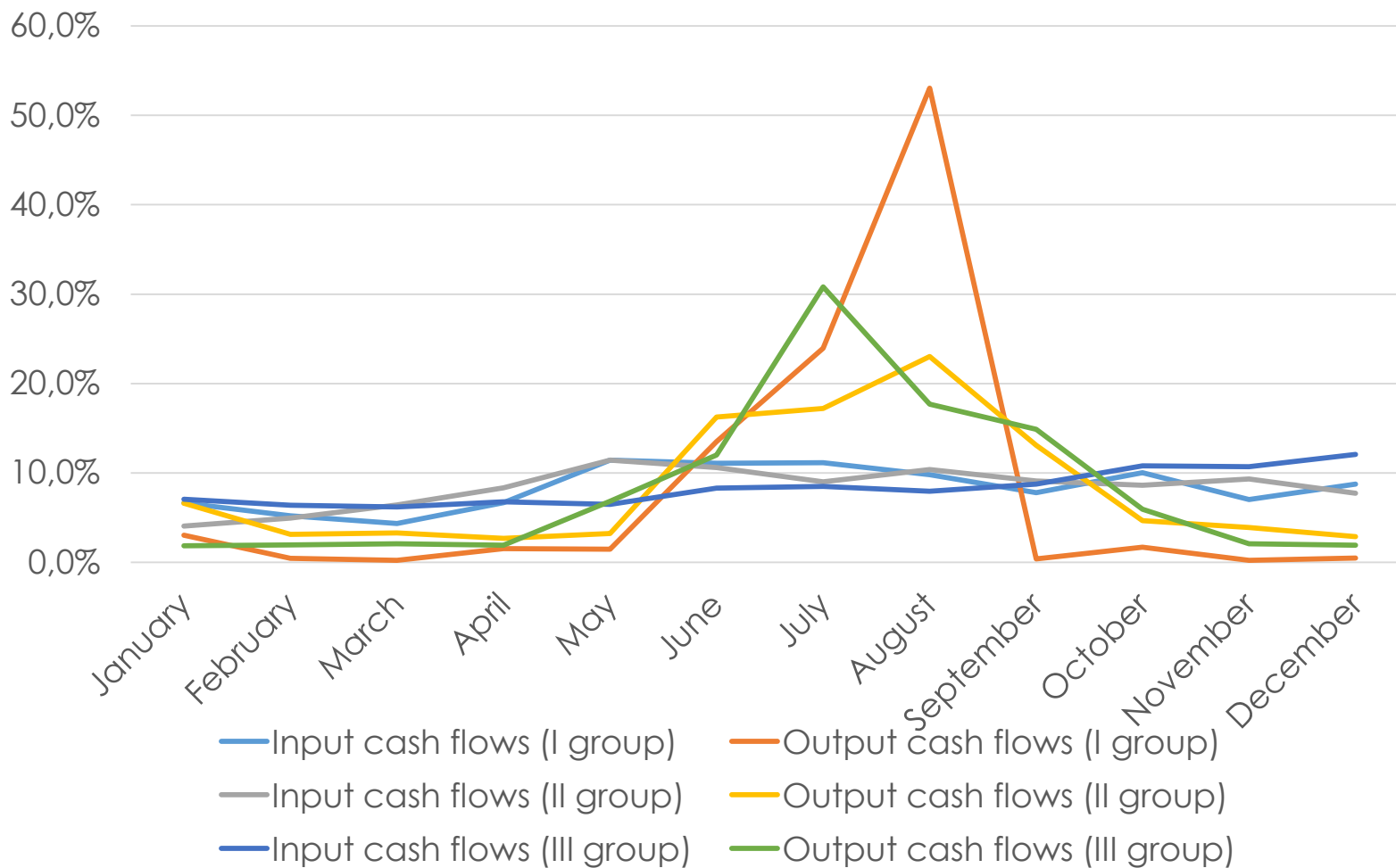
The amount of the given milk per 1 animal of the milking herd, kg



Dairy Business Development Project in Ukraine

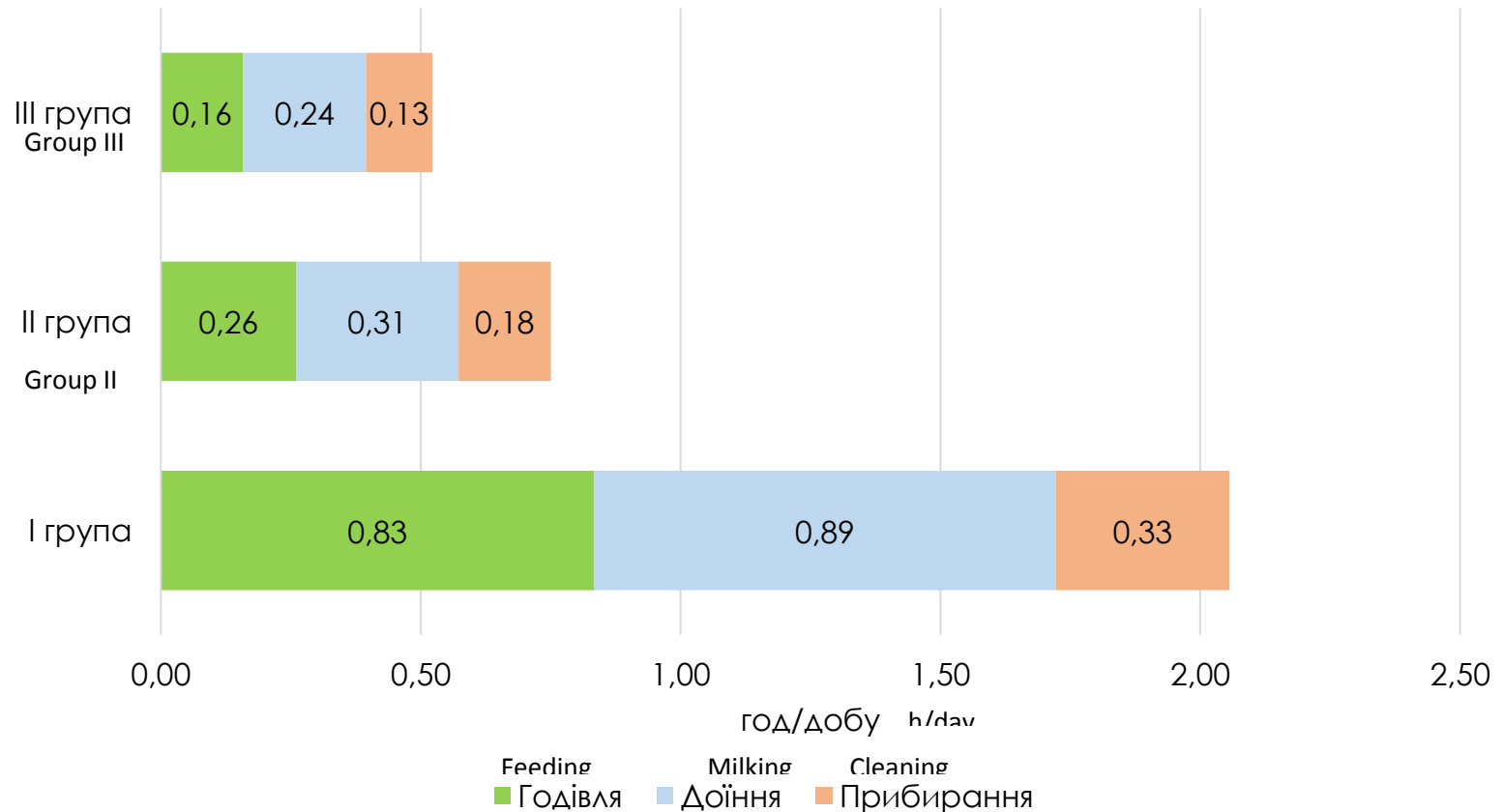
Indicator	Average		
	Group I	Group II	Group III
Costs per one head of dairy cattle, UAH	8852.0	8943.9	12252.5
Production cost of milk, UAH/kg	2.65	2.91	2.61
Operational profitability, %	16%	8.4%	28.22%

Fluctuations in the input and output cash flows for the groups of the family farms



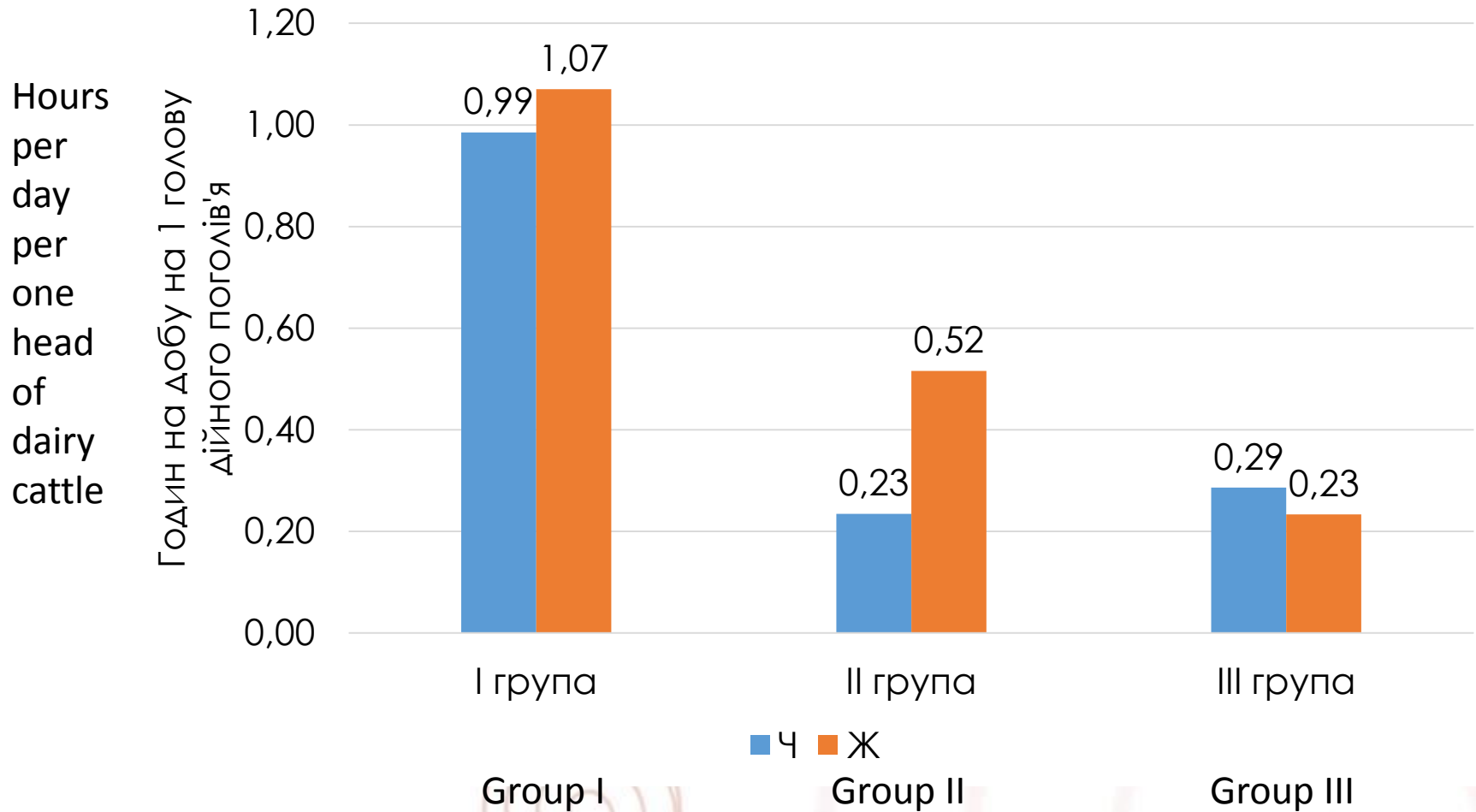
Dairy Business Development Project in Ukraine

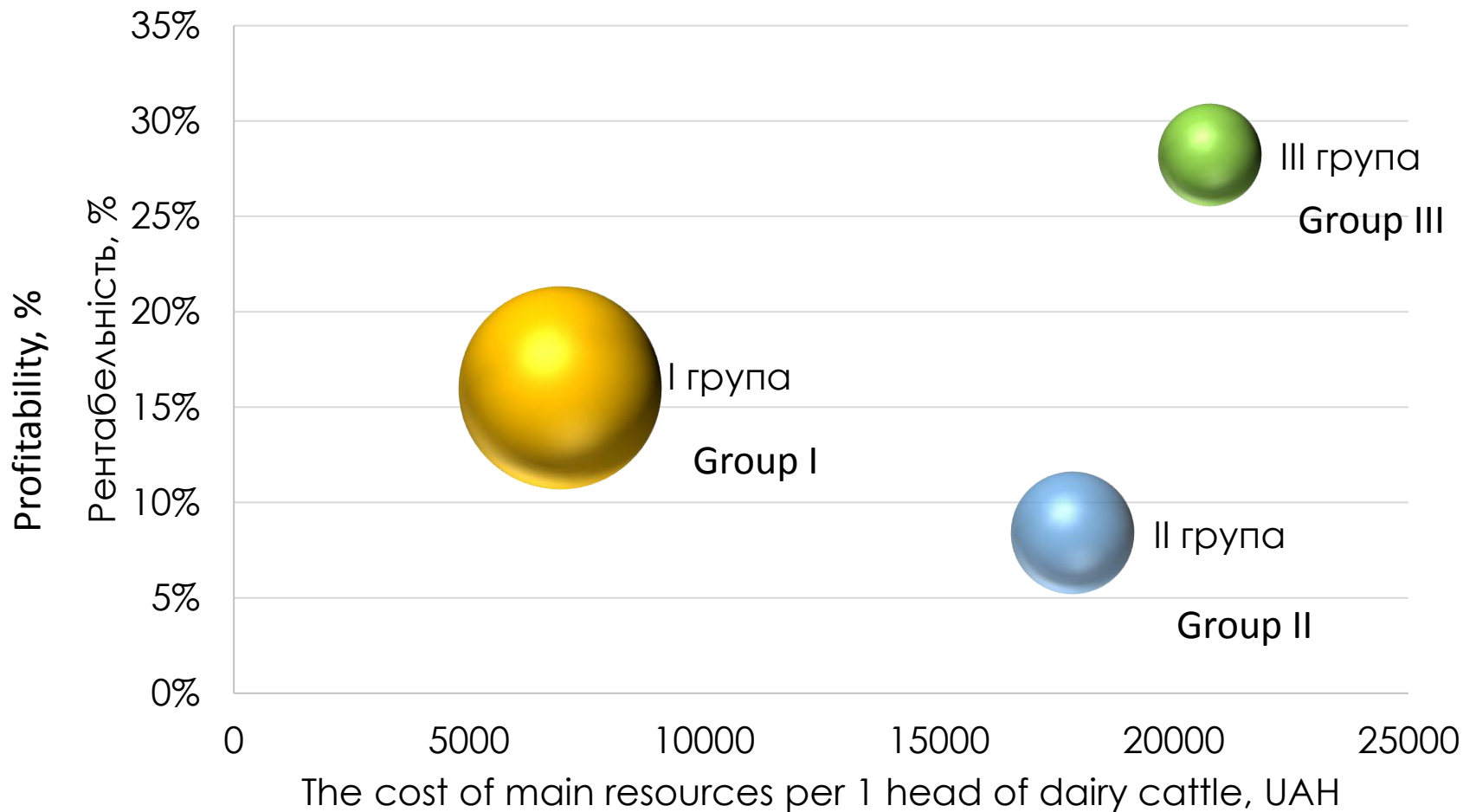
Time expenditure on looking after one head of dairy cattle by FF groups, h/day



**Group I – 2.06 hours per day/cow,
Group II – 0.75 hours per day/cow,
Group III – 0,52 hours per day/cow.**

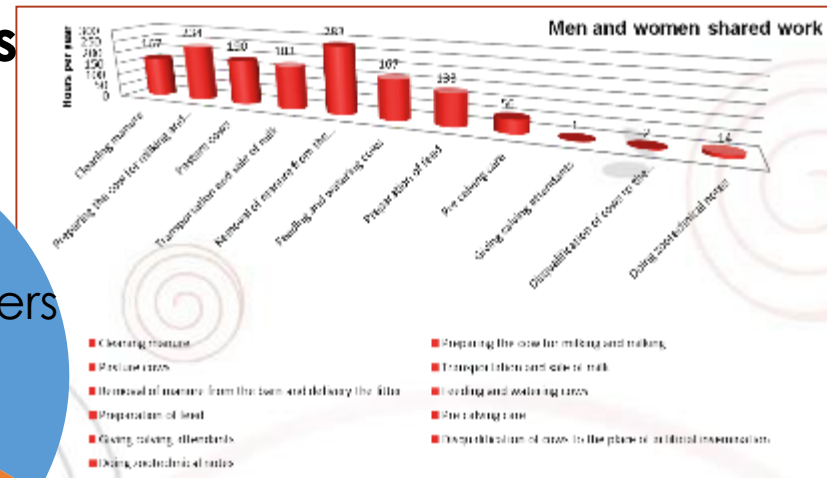
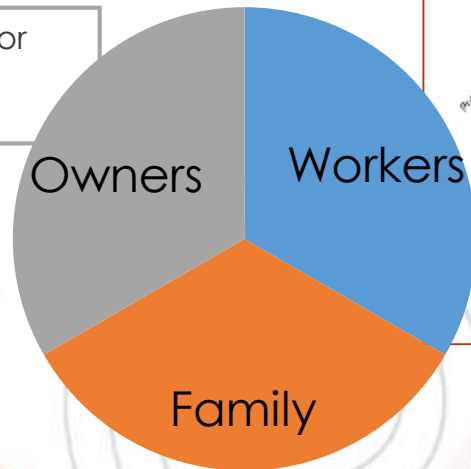
Time expenditure for men and women on looking after 1 head of dairy cattle by household groups





Family Farms

Farm premises: comfort conditions for animals;
 Herd: Land: Profitability:



Dairy Business Development Project in Ukraine